

## Summary of the Swift Brick Installations at Oughtibridge Mill by Sky-House Co.

Information collated by:

Laura Lian and Melanie Savas of S6 Swifts -

*A small community group taking action to help swifts in Hillsborough, Walkley & the S6 postcode area*

COLLABORATION BETWEEN S6 SWIFTS (WITH THE ADVICE OF SWIFT CONSERVATION'S EDWARD MAYER) AND SKY-HOUSE CO RESULTED IN THE INSTALLATION OF 50 SWIFT BRICKS IN THE NEW HOUSING DEVELOPMENT IN OUGHTIBRIDGE, SHEFFIELD IN 2022.



**Sky-House Co Contact Details** - First Floor, Unit F, Centenary Business Park 150 Little London Road, Sheffield, S8 0UJ

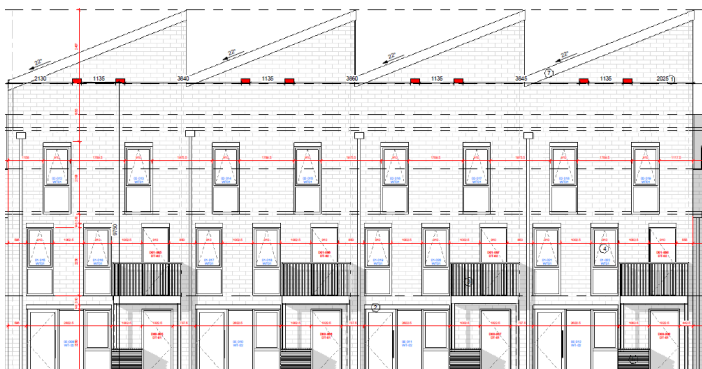
[www.sky-house.co](http://www.sky-house.co), 0114 299 1666.

**Site Location-** Oughtibridge Mill, Main Road, Oughtibridge, Wharncliffe Side, S35 0GQ

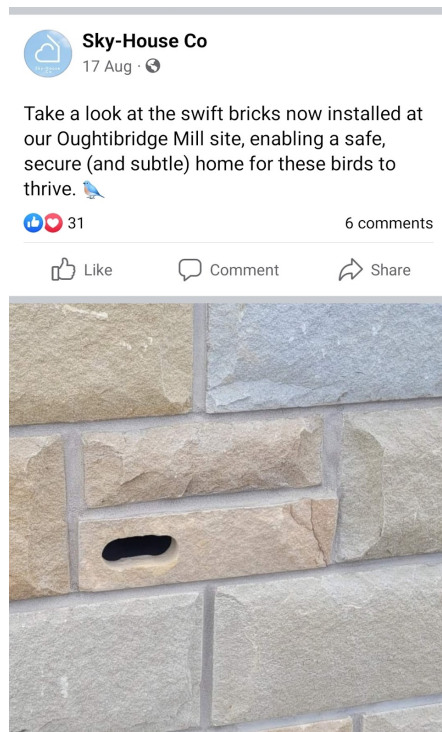
**Approx date of installation** - Summer 2022

**Numbers installed** - 50

**Ratio per house** - 1 or 2 per dwelling (See Architect's drawing below):



## The bricks in situ:



Site Manager Paul Battye at Oughtibridge Mill:

*"They are very easy to install. The swift boxes are made to the size of a brick so they just slot in when doing the brickwork....We do not believe there is any detriment to a building in using them. In fact we believe they add a lot of value."*

### Specification of the bricks:

The S Brick nest chamber comes in 2 materials:

- Palight PVC foam board. Light weight, thermally sympathetic
- Galvanised steel, heavier, stronger and fireproof for situations with fire-proof regulations

They both have a cloakboard (cement fibre) floor.

They both come in a range of facings (brick/stone/render) and a range of depths for different cavities (130mm/175mm/200mm)

The cost at the time of writing (Nov-22): £34 plus postage at cost.

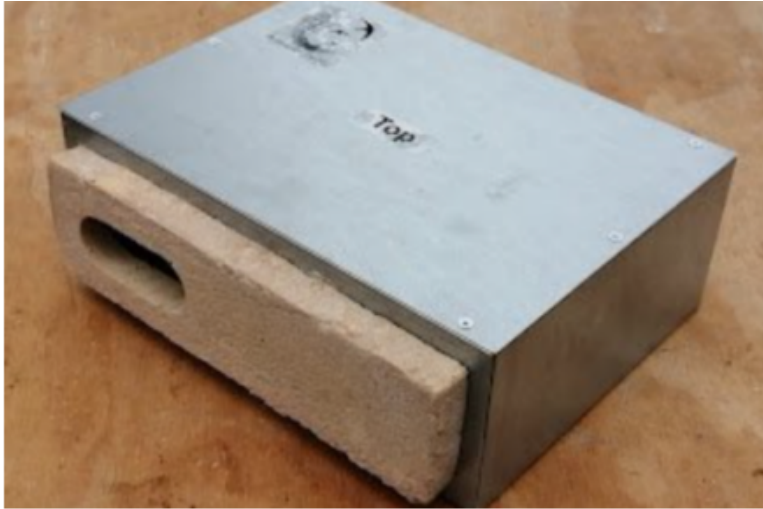
They meet the standards specified in BS 42021: *Integral nest boxes - Design and installation for new developments - Specification.*

**Some of the actual bricks delivered to Sky-House Co which have now been installed:**



The bricks were supplied by Dick Newell of **Action For Swifts** (<https://www.actionforswifts.com>)





# Model S Installation



Occupies the space of one course of bricks.



Cavity side with the back removed, showing the built-in nest form.

We've worked with

**Taylor  
Wimpey**

**Berkeley  
Group**

**HOPKINS  
HOMES**

**M  
MORRISH  
HOMES**

**CORNERSTONE**

**DUNDAS**

**DEAN & DEAN**

CONSTRUCTION LTD

**Cambridge  
City Council**

**WAINHOMES**  
BUILDING BRITAIN'S HERITAGE

**THAKEHAM** | GROUP

## The S Brick: A Solution for Swifts

The S Brick is a proven product that integrates a home for Swifts and other cavity-nesting birds, without compromising the integrity or appearance of the building.

Experience gained in a wide range of nest boxing projects has resulted in the simple and lightweight S Brick. Spanning a single course of bricks, the S Brick can either be retrofitted or seamlessly installed as part of the standard building process.

- **Swifts and House Sparrows are colonial**  
If possible, install 2 or 3 nest boxes in groups, with an average of one per house.
- **Install as high as possible**  
Above 4 metres, more than 5 metres is better.
- **Avoid obstructions**  
Such as trees within 15 metres.
- **South facing walls are fine**  
Internal nest boxes do not overheat.